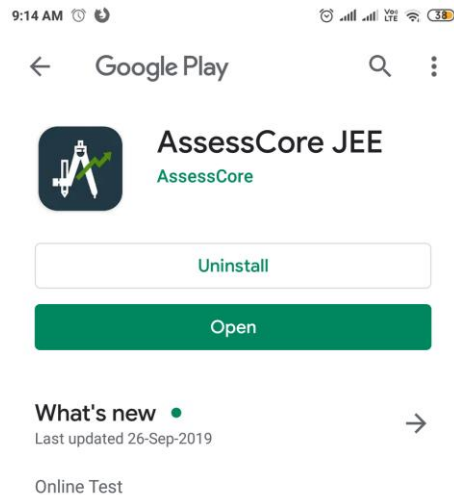


AssessCore Platform – Mobile Application User Manual

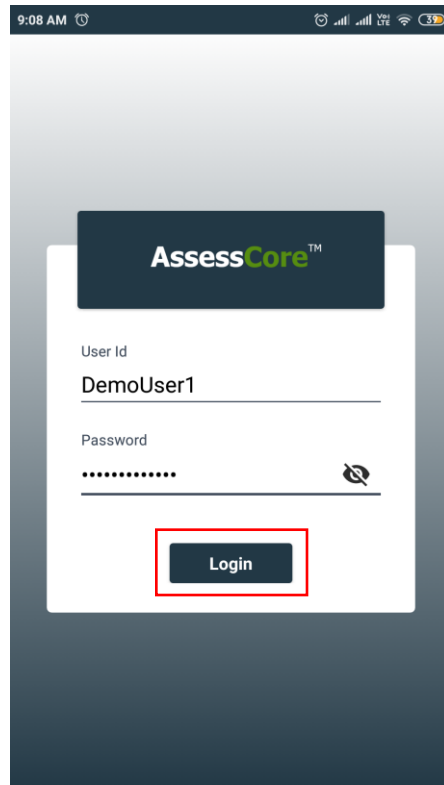
Step 0: Download Mobile App

- Download the Mobile app using the play store link
<https://play.google.com/store/apps/details?id=in.assesscore>
- Or Search in Google Play Store and download the Mobile App as shown below



Step 1: Login

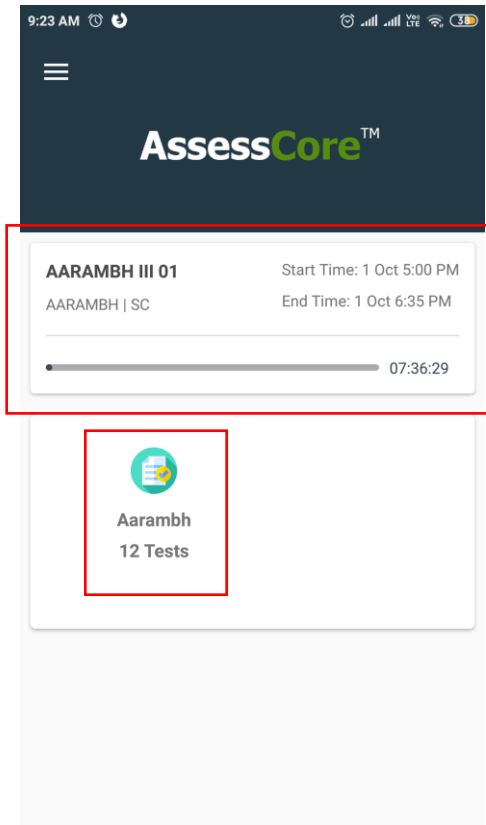
- After installation, launch the mobile application to see a login page is displayed
- User has to enter provided “username” and “password” fields and tap Login as shown in the image below.
- Password is case-sensitive, the capital and small letters have to be entered as they were provided.



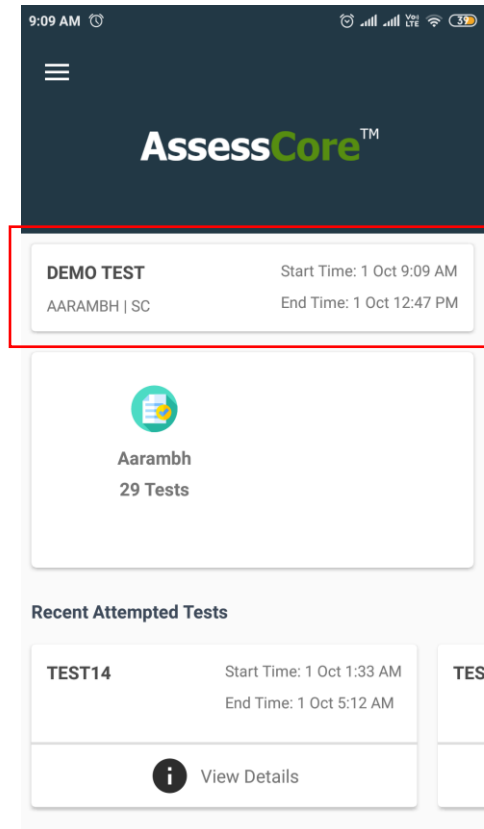
Step 2: User Home Page

- User will be navigated to user home page shown below after successful login
- The page will have following sections
 - Up Next Section: Displays the immediate next online test user is expected to write along with the time remaining for the test to go live(to start)
 - Test Series: Shows all test series which user has access to
- There will be another section of Recent Tests visible for users who have at least attempted one test.
- To start the next upcoming test, User can tap navigate to Test Home Page by tapping on the test, only after the test is **LIVE**.
- To search or start any other next (not the next upcoming test), users can tap on any of the Test Series and proceed further.

Before the test is LIVE:

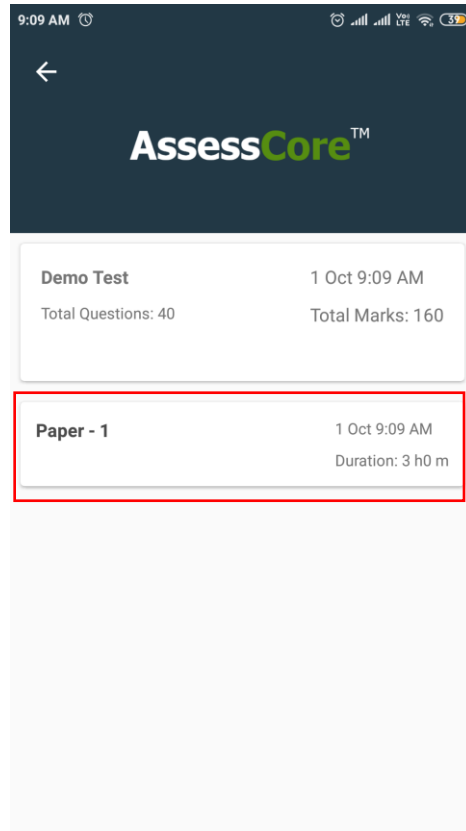


After the test is LIVE:



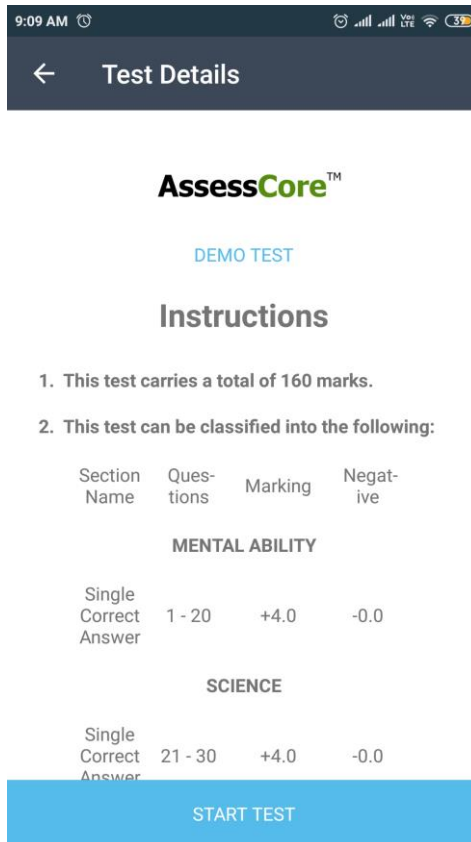
Step 3: Test Home Page

- When user taps on Next upcoming text on User Home page or drills down into Test Series to search and select a Test, they will be navigated to Test Home page.
- All the details related to test are provided in the Test Home page, including the number of papers, start time, end time and the duration
- To Start the Test, Tap on the Test Paper button as shown in the image below. Note that the Start Test button only proceeds further with test only after the test is live, i.e after the start time of the test.



Step 4: Test Instruction Page

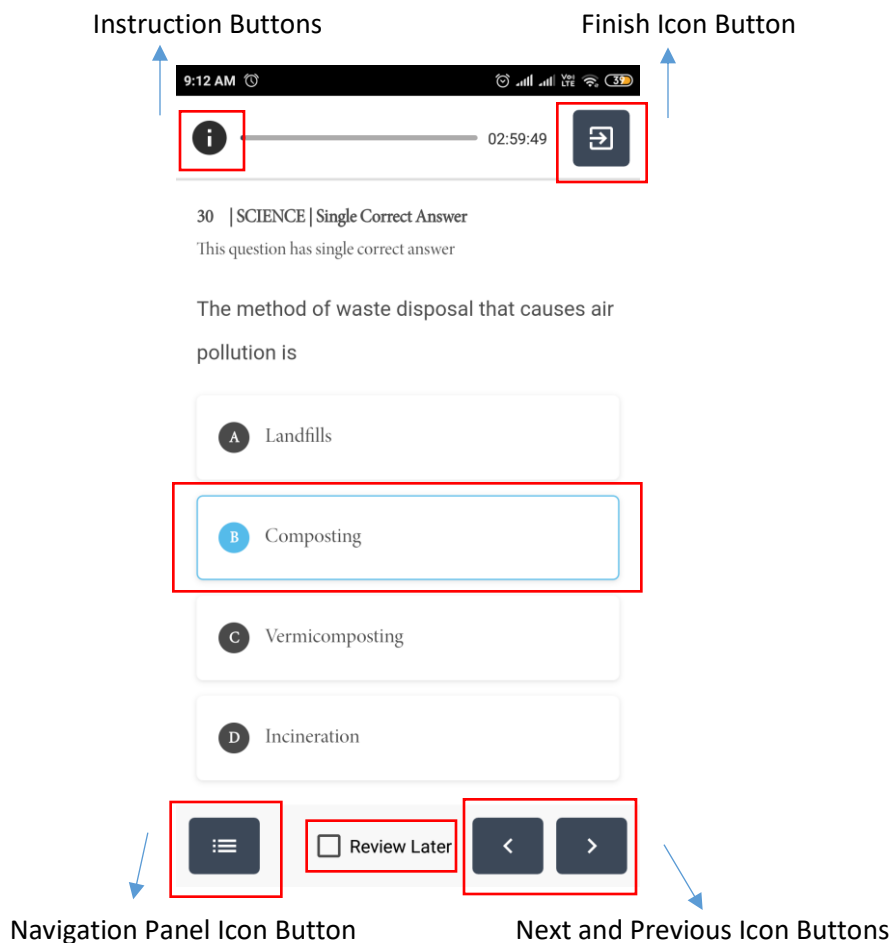
- Start Test action from Test Home Page brings user to Test instructions page
- All the instructions of the test are clearly mentioned, including the navigation instructions for the test.
- Click on Start Test button, confirm the same action by clicking Start Test again on dialog box that appears as shown in the image below. Please note that this will start the actual duration of the test.



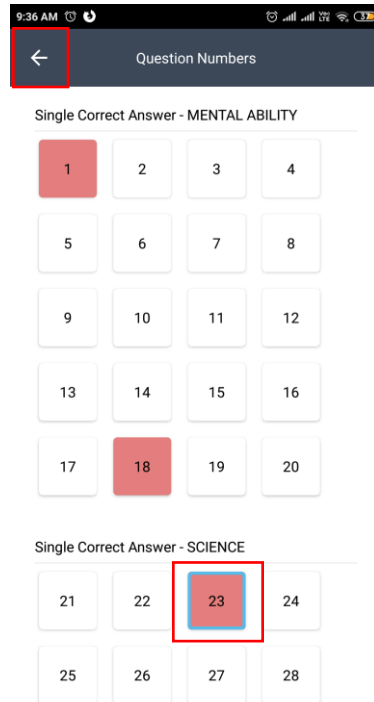
Step 5: Test Interface

- Once you start the test, user will be navigated to the test interface shown in image below.
- The following are main test level components in the test interface page
 - Test Timer: A timer is provided for user to evaluate the remaining duration of the test.
 - Instruction button: User can go back to visit instructions and Resume test again.
 - Finish button: Finish button will end the test.
- Marking/Changing/Removing a answer:
 - Question Response: User can provide an answer to the question by tapping any of the option Radio buttons to mark the correct option. He can also switch options by tapping on another option
 - Clear Response: If User wishes to remove any answer response to the question, after initially marking an option, he can do so by tapping the same option again.

- Mark for Review: This is provided for user convenience, user can tick a question for review if he wished to come back to the question at a later stage before finishing the test.
- Navigation Instructions:
 - User can navigate to next and previous question by clicking on the Next and Previous icon Button provided as shown below
 - User can also use the navigation question panel by clicking the navigation panel icon button to navigate across questions. User can navigate to any question of any section by clicking that question number on the navigation panel on the right side.
 - User can follow the instructions provided to understand the color schema followed for the questions in the navigation panel.
 - Transparent: Not yet visited that question
 - Red: Visited question, but not provided an answer
 - Green: Visited question and provided an answer
 - Purple: Question marked for review but not provided an answer
 - Purple with green tick: Question marked for review and answer is provided



Navigation Panel: (Opens on tapping Navigation Panel Icon Button above)



Step 6: Finish Test and Redirect to Test Home Page

- User can finish the test by tap Finish Test Icon Button, and confirming the same action in the dialog box as shown in the image below.
- After successful, submission user will be redirected to the Home page. It is recommended for the User to wait for few seconds for the submission to go through after tapping on Finish Icon button.

