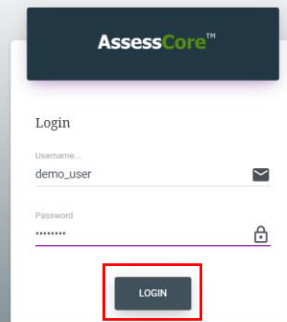


## AssessCore Platform – Web Application User Manual

### Step 1: Login

- Once user navigates to AssessCore application for the first time login page is displayed
- User has to enter provided “username” and “password” fields and click Login as shown in the image below.
- Password is case-sensitive, the capital and small letters have to be entered as they were provided.

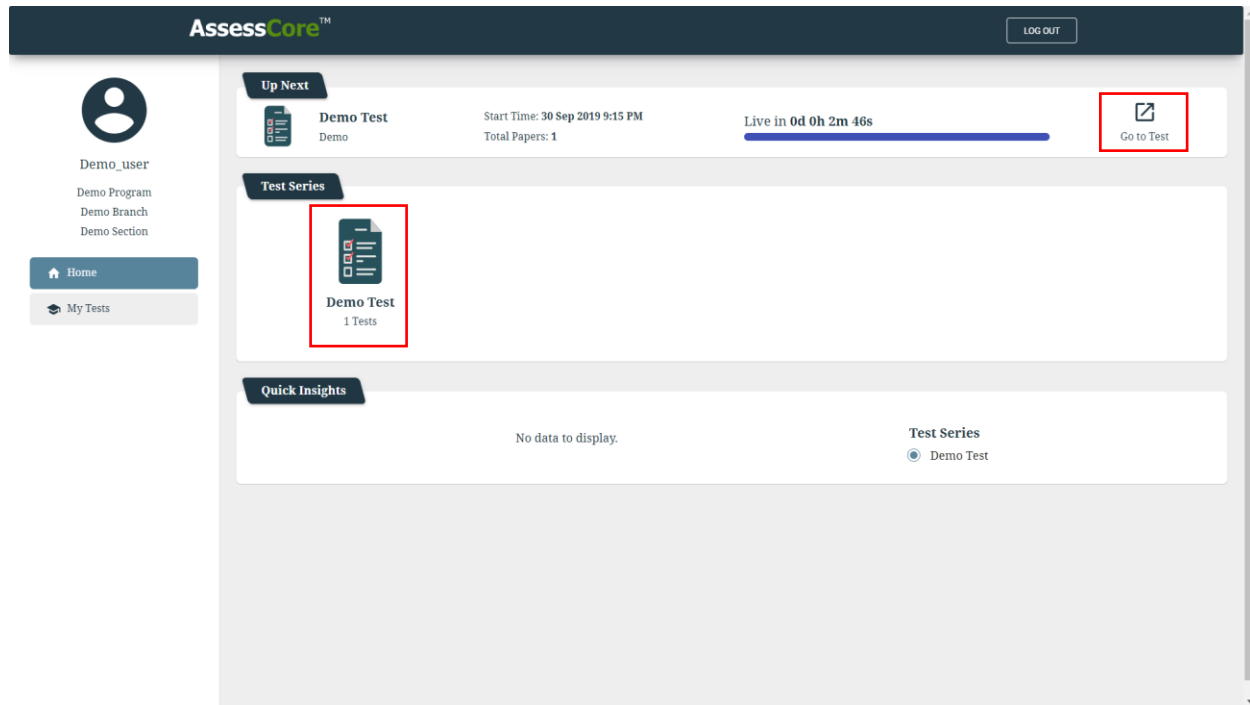


© 2019 , Minutemen Innovations Pvt. Ltd.

### Step 2: User Home Page

- User will be navigated to user home page shown below after successful login
- For first time users, the page will have three sections
  - Up Next Section: Displays the immediate next online test user is expected to write along with the time remaining for the test to go live(to start)
  - Test Series: Shows all test series which user has access to
  - Quick Insights: Shows graphical analysis for results across tests taken by the user
- There will be another section of Recent Tests visible for users who have at least attempted one test.


- To start the next upcoming test, User can navigate to Test Home Page by clicking “Go To Test” in Up Next section as shown below in the image.
- To search or start any other next (not the next upcoming test), users can click on any of the Test Series and proceed further.
- “My Tests” menu button in the left navigator also shows all the tests available to the user.



### Step 3: Test Home Page

- When user clicks on Go To Test on User Home page or drills down into Test Series to search and select a Test, they will be navigated to Test Home page.
- All the details related to test are provided in the Test Home page, including the start time, end time and the duration
- To Start the Test, click on the Start Test button as shown in the image below. Note that the Start Test button is only displayed after the test is live, i.e after the start time of the test.

AssessCore™ LOG OUT



Demo\_user  
Demo Program  
Demo Branch  
Demo Section


Home  
My Tests

### Test Home

Name	Demo Test
Identifier	Demo Test
Status	Live
Total Papers	1
Description	Demo Test for manual

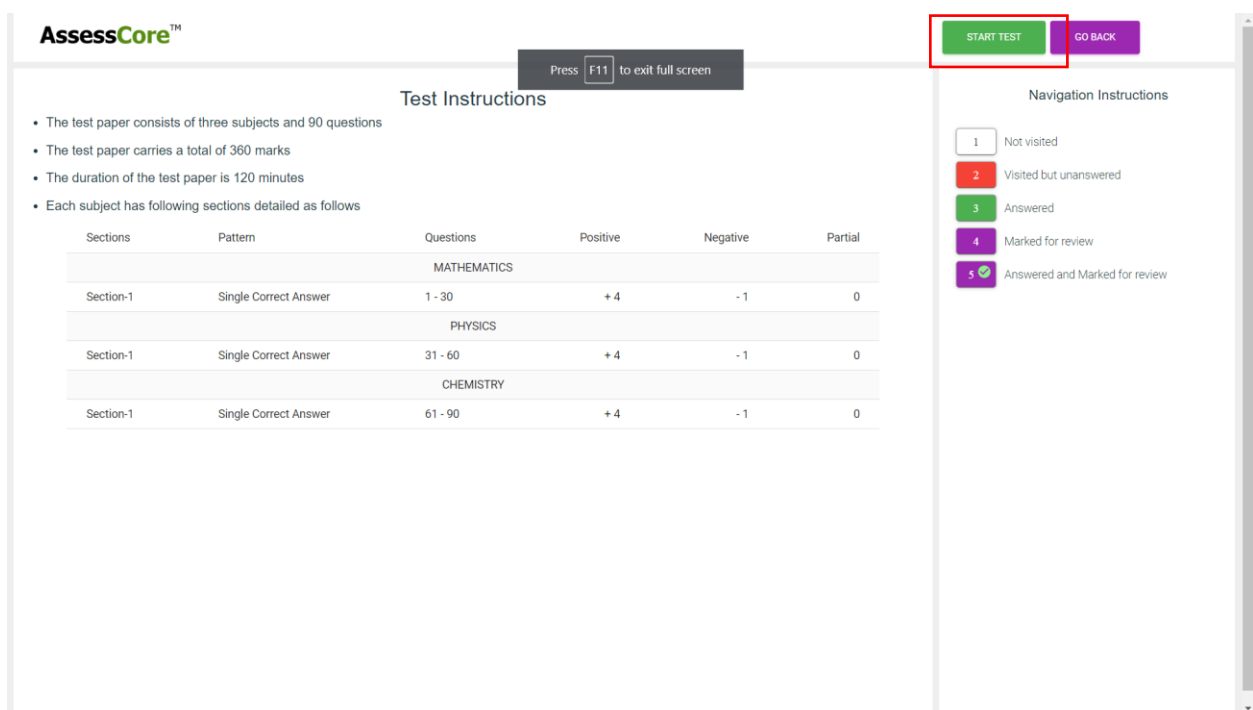
#### Test Papers

Paper	1
Start Time	30 Sep 2019 9:15 PM
End Time	1 Oct 2019 11:15 AM
Duration	02:00 Hours
Total Attempts	1
Attempts Left	1
Total Questions	90
Maximum Marks	360



#### Step 4: Test Instruction Page

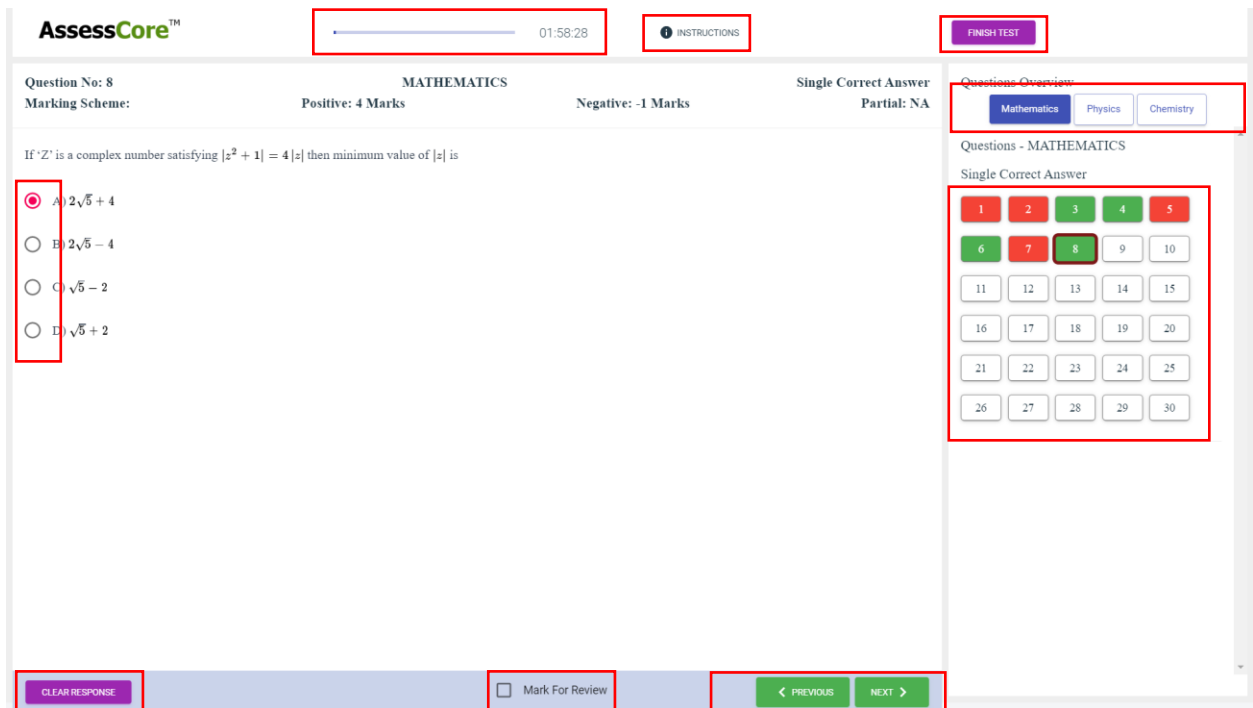
- Start Test action from Test Home Page brings user to Test instructions page
- All the instructions of the test are clearly mentioned, including the navigation instructions for the test.
- Click on Start Test button, confirm the same action by clicking Start Test again on dialog box that appears as shown in the image below. Please note that this will start the actual duration of the test.



## Step 5: Test Interface

- Once you start the test, user will be navigated to the test interface shown in image below.
- The following are main test level components in the test interface page
  - Test Timer: A timer is provided for user to evaluate the remaining duration of the test.
  - Instruction button: User can go back to visit instructions and Resume test again.
  - Finish button: Finish button will end the test.
- Marking/Changing/Removing a answer:
  - Question Response: User can provide an answer to the question by clicking any of the Radio buttons to mark the correct option. He can also switch options by clicking on Radio button for another option
  - Clear Response button: If User wishes to remove any answer response to the question, after initially marking an option, he can do so by clicking clear response.
  - Mark for Review: This is provided for user convenience, user can tick a question for review if he wished to come back to the question at a later stage before finishing the test.
- Navigation Instructions:
  - User can navigate to next and previous question by clicking on the Next and Previous Button provided as shown below

- User can also use the navigation question panel on the right side to navigate across questions. User can navigate to any question of any section by clicking that question number on the navigation panel on the right side.
- User can also navigate across subjects by clicking on the subject button at the top of the navigation panel in the right.
- User can follow the instructions provided in the Test instructions page to understand the color schema followed for the questions in the navigation panel.
  - Transparent: Not yet visited that question
  - Red: Visited question, but not provided an answer
  - Green: Visited question and provided an answer
  - Purple: Question marked for review but not provided an answer
  - Purple with green tick: Question marked for review and answer is provided



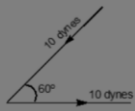
## Step 6: Finish Test and Redirect to Test Home Page

- User can finish the test by click Finish Test action, and confirming the same action in the dialog box as shown in the image below.
- After successful, submission user will be redirected to the Test Home page. The green tick on the test icon in the Test Home page indicates the successful attempt of the test.

AssessCore™ 01:57:15 INSTRUCTIONS FINISH TEST

Question No: 31      PHYSICS      Single Correct Answer      Questions Overview  
Marking Scheme:      Positive: 4 Marks      Negative: -1 Marks      Partial: NA      Mathematics      Physics      Chemistry

Two forces each numerically equal to 10 dynes are acting as shown in the following figure, then the resultant is



A) 10 dynes  
 B) 20 dynes  
 C)  $10\sqrt{3}$  dynes  
 D) 5 dynes

Finish Test

You are about to finish the test. Are you sure?  
By clicking Finish you agree to all our terms and conditions.


**FINISH TEST**

Questions - PHYSICS  
Single Correct Answer

31	32	33	34	35
36	37	38	39	40
41	42	43	44	45
46	47	48	49	50
51	52	53	54	55
56	57	58	59	60

CLEAR RESPONSE       Mark For Review      < PREVIOUS      NEXT >

AssessCore™ LOG OUT


  
Demo\_user  
Demo Program  
Demo Branch  
Demo Section

Home  
My Tests

### Test Home

Name	Demo Test
Identifier	Demo Test
Status	Live
Total Papers	1
Description	Demo Test for manual

#### Test Papers

	Paper	1
	Start Time	30 Sep 2019 9:15 PM
	End Time	1 Oct 2019 11:15 AM
	Duration	02:00 Hours
	Total Attempts	1
	Attempts Left	0
	Total Questions	90
	Maximum Marks	360

**VIEW SOLUTIONS**